

# Technical data-sheet for Welding-head SK-2015

Manufacture:

**KombiTec GmbH**

An der Römerstr. 1

D-87488 Betzigau

**GERMANY**

Tel: +49 (0) 831 / 960 398 - 0

Fax: +49 (0) 831 / 960 398 - 10



### Benefits:

- Welding-head for up to max. 200 N welding force
- Displacement- and infeed-movement separate
- Due to modular principle highest compatibility to other KombiTec products
- Compact, but highly flexible construction with lowest possible weight
- Precise positioning-accuracy, stability and robustness due to pre-stressed ball-bearings
- Highest reproducibility through shape-connection
- Outstanding displacement behaviour due to unstressed anti-torsion units
- Simple adjusting of sensors and stroke
- Infinitely variable damping force
- various opportunities to monitor displacement-force with piezo-force measuring
- various opportunities to monitor displacement-distance with high-speed distance-sensors

### Application areas:

Suitable for all standard weldings, like:

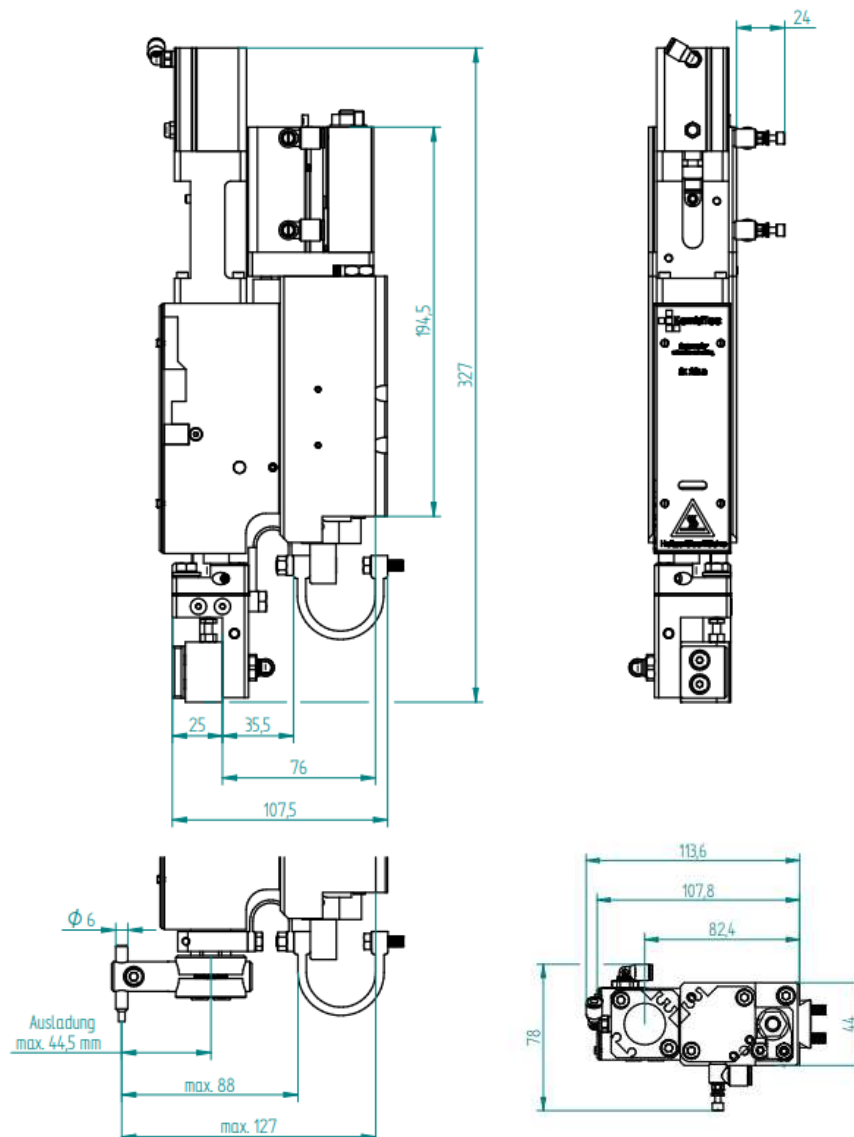
- Lightning industry: tungsten-filaments welding to molybdenum-pins in light-bulbs
- Automotive industry: welding of contacts in moulded plastic-parts with other parts
- Electrical industry: resistors to contacts, capacitors to solenoids, stranded wires to contacts
- Electronic industry: Very small, small and medium sized products
- consumer industry: small sized parts

### Technical changes:

Technical modification and price changes without notices. All dimensions are in „mm“.  
No liability can be accepted for printing errors.

## Technical data:

|   |                                       |
|---|---------------------------------------|
| Zylinderdurchmesser der Zustelleinheit: | Ø 12 mm / Ø 16 mm / Ø 20 mm / Ø 25 mm |
| Theoretische Max. Kraft:                | ca. 200 N (ausfahrend, bei 5,0 bar)   |
| Medium pressed air:                     | Filtered 5µm, oiled or un-oiled       |
| Pneumatic fittings:                     | M5 / Ø 6,0 mm                         |
| Working pressure:                       | 3 – 7 bar                             |
| Working temperature:                    | 0°C – 60°C                            |
| Max. weight of electrode holders:       | < 1,0 kg                              |
| Max. projection                         | 45 mm                                 |
| Max. stroke:                            | 15 mm                                 |
| Max. follow-up movement:                | 4,5 mm                                |
| Air consumption per cycle:              | 0,15 l (at 5 bar and max. stroke)     |
| Total weight:                           | 2,8 kg                                |
| Max. current:                           | 10,0 kA at 20 % ED                    |



Picture: Dimension welding head SK-2015 without fixing/ mountings

## Welding-head SK-2015

Option of configuration:

Spring-load unit, mech.  
SK-2015-RR-000

Spring-load cylinder with piezo-  
force-measuring unit incl amplifier  
SK-2015-RD-xxx

Displacement-sensor SK-2015-WS-

Displacement-spring  
SK-2015-RR-xxx

Thermode-holder  
SK-2015-TH-000

Electrode-base-holder, with/without  
cooling SK-2015-RO-xxx

Electrodes and Thermodes on  
request SK-2015-xxx

Electrode quick-hitch  
SK-2015-EH-xxx

Electrode-basie holder, with/without  
cooling SK-2015-Rx-xxx

