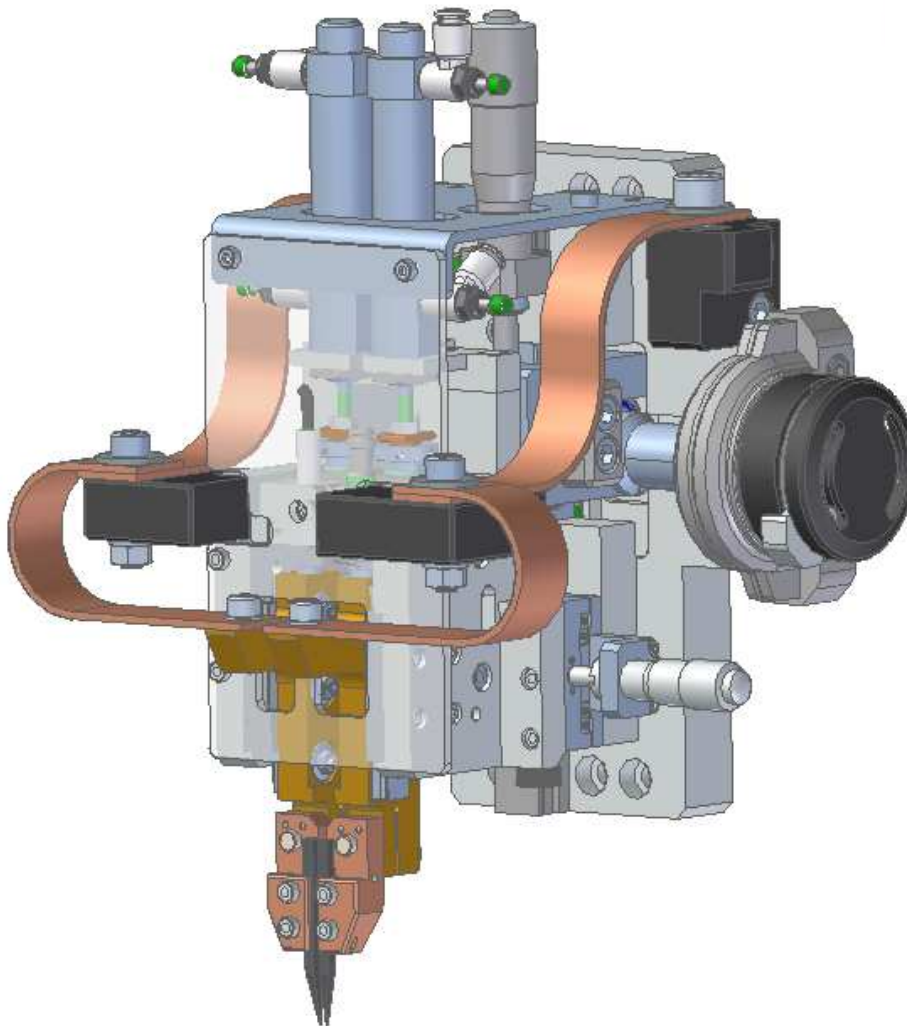


Technical data-sheet for double welding-head DK-2004

Manufacture:

KombiTec GmbH
An der Römerstr. 1
D-87488 Betzigau
GERMANY
Tel: +49 (0) 831 / 960 398 - 0
Fax: +49 (0) 831 / 960 398 - 10



Benefits:

- High dynamics due to low moving mass
- Precise electrodes quick-change system as standard
- Holder for thermodes available
- Suitable for displacement-measuring
- Easy change from thermode-welding-mode to electrode gap welding
- Welding-gap with micrometer screw adjustable
- Working stroke adjustable up to 0,01 mm
- Working stroke in end-position locked

Application areas:

Suitable for all weldings of small and very small components and very little displacement-forces, like:

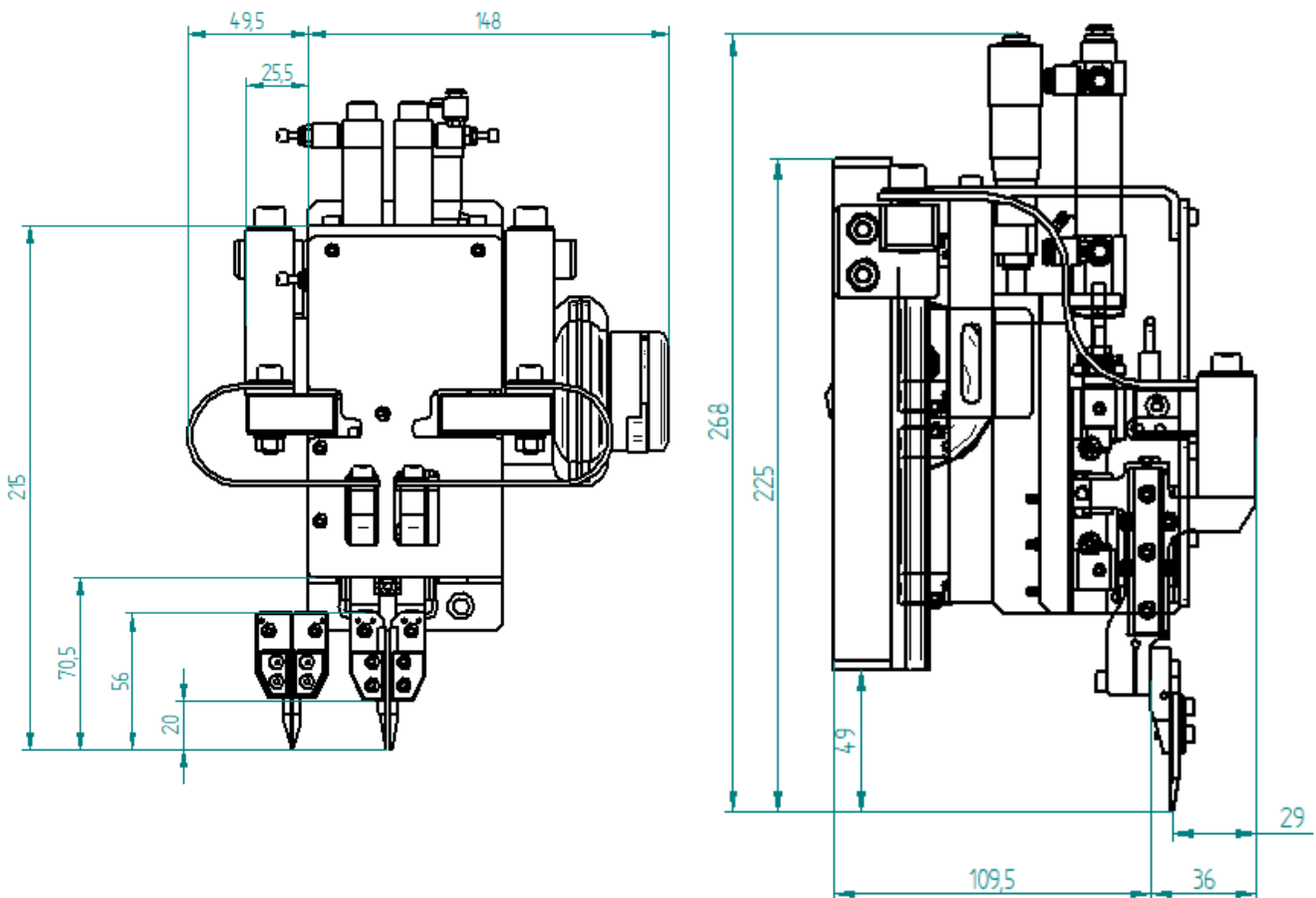
- Lightning industry: tungsten-filaments welding to molybdenum-pins in light-bulbs
- Automotive industry: welding of contacts in moulded plastic-parts with other parts
- Electrical industry: resistors to contacts, capacitors to solenoids, stranded wires to contacts
- Electronic industry: Very small, small and medium sized products, hot-staking at solenoids
- Consumer industry: small sized parts
- High-precise solderings

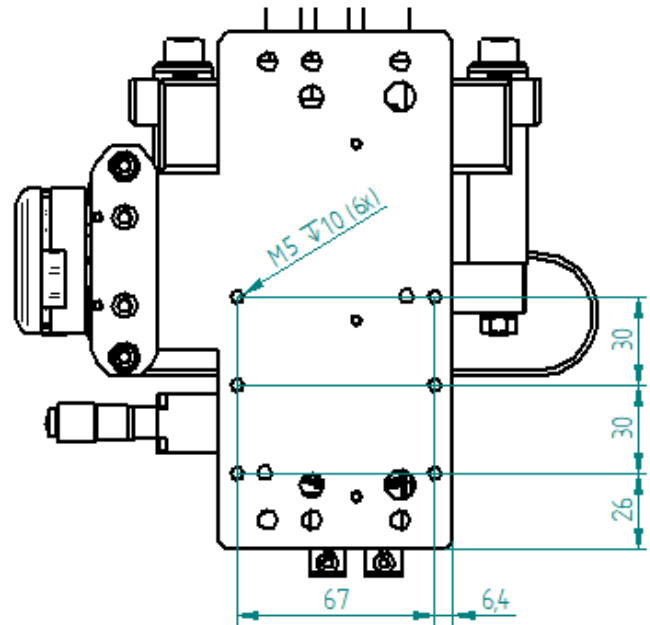
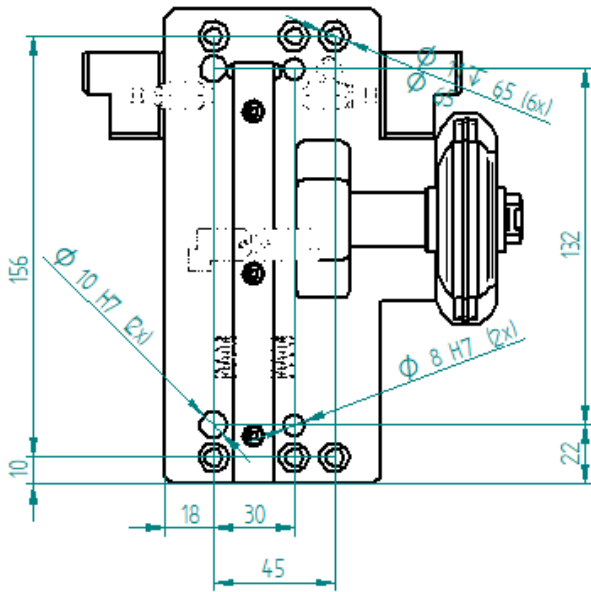
Technical changes:

Technical modification and price changes without notices. All dimensions are in „mm“. No liability can be accepted for printing errors.

Technical data:

Infeed unit:	pneumatically driven cylinder with \varnothing 10 mm
Displacement cylinder:	between 0,2 N - 20,0 N
Medium pressed air:	filtered 5 μ m, free of water / dried, oiled or unoled
Pneumatic fittings:	G1/4"
Pneumatic hose:	\varnothing 6 mm
Working pressure:	3,5 – 6,5 bar
Working temperature:	0°C – 60°C
Repeatability:	\pm 0,01 mm
Max. weight of electrode holders:	< 0,5 kg
Max. stroke:	max. 15 mm (adjustable with exenter-drive)
Air consumption per cycle:	approx. 0,3 L (at 5 bar and max. stroke)
Total weight:	approx. 3,5 kg
Max. current:	0,5 kA at 20 %ED





Double-welding head DK-2004

Option of configuration:

